



Please read this Operation Manual carefully before use, and file for future reference.

MADE IN JAPAN
[QM-C0065E]001



⚠ Caution

- When operating the contra angle handpiece always consider the safety of the patient.
- The contra angle handpiece is designed only for clinical dental use by qualified personnel.
- Do not attempt to disassemble the contra angle handpiece or tamper with the mechanism.
- Do not allow any impact on to the contra angle handpiece. Do not drop the contra angle handpiece.
- Check for vibration, noise and overheating outside the patient's oral cavity before use. If any abnormalities are found, stop using the contra angle handpiece immediately and contact authorised dealer.
- Should the contra angle handpiece function abnormally, cease operation immediately and return the contra angle handpiece to an authorised dealer for repair.
- Before use always confirm that the tip is correctly seated and locked into place.
- Do not exceed the drive motor speed recommended the tip manufacturers.
- Do not operate the contra angle handpiece without the tip.
- Do not exceed a speed of $10,000\text{min}^{-1}$ at the head of the contra angle handpiece.
- Do not connect or disconnect the contra angle handpiece until the drive motor has completely stopped.

1. Specification

Model	EVA-Y
Allowable Max. Speed	$10,000\text{ min}^{-1}$
Attachment	Eva Tip
Motion	Vertical Reciprocating Stroke Length 1.4mm

2. Mounting and Removing tip

⚠ Caution

Do not connect or disconnect the tip until the drive motor has completely stopped.

Hold the tip and push the shaft into the head until it stops.

To remove the tip, push the back end of tip with thumb and pull out the tip from front end.

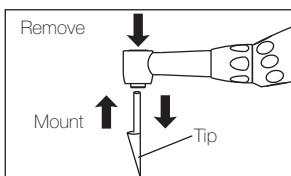


Fig. 1

3. Lubrication

Supply PANA SPRAY Plus / PANA SPRAY after each use and/or before autoclaving.

■ PANA SPRAY Plus / PANA SPRAY

- 1) Mount the E-type spray nozzle into the spray port.
- 2) Shake the can 3-4 times to well mix lubricant and propellant.
- 3) Insert the E-type spray nozzle in the rear of the handpiece and spray for approximately 2-3 seconds until the oil comes out of the handpiece head.

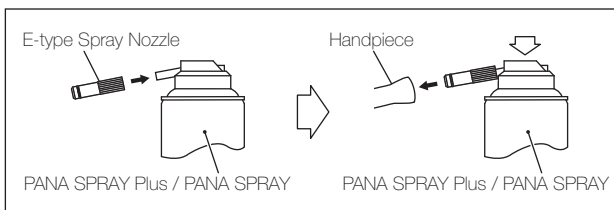


Fig. 4

⚠ Caution

- Be sure to hold the handpiece firmly to prevent the handpiece from slipping out of hand by the spray pressure when lubricating.
- Supply lubricant until it comes out of the handpiece head (for approx. 2 seconds).
- Hold the spray can upright.

4. Sterilization

Steam autoclave is recommended.

Sterilization is required first time you use and after each patient.

■ Autoclave Procedure :

- 1) Scrub dirt and debris from the handpiece, and wipe clean with alcohol-immersed cotton swab or cloth. Do not use a wire brush.
- 2) Lubricate with lubricate spray. Refer to 3. Lubrication.
- 3) Insert into an autoclave pouch. Seal the pouch.
- 4) Autoclavable up to max. 135°C.
Ex.) Autoclave for 20 min. at 121°C, or 15 min. at 132°C.
- 5) Keep the handpiece in the autoclave pouch to keep it clean until you use it.

* Sterilization at 121°C for more than 15 minutes is recommended by EN13060 or EN554.

⚠ Caution

Do not wipe with, or clean or immerse in, high acid water or sterilizing solutions.

NAKANISHI INC.

www.nsk-inc.com

700 Shimohinata Kanuma-shi
Tochigi 322-8666,
Japan

NSK America Corp

www.nsk-inc.com

700 Cooper Court
Schaumburg, IL 60173,
USA

NSK Oceania Pty Ltd

www.nsk-inc.com

Unit 22, 198-222 Young St.
Waterloo, Sydney,
NSW 2017, Australia

NSK Europe GmbH

www.nsk-europe.de

Elly-Beinhorn-Strasse 8
65760 Eschborn,
Germany

NSK France SAS

www.nsk.fr

19 avenue de Villiers
75017 Paris,
France

NSK Middle East

www.nsk-inc.com

Room 6EA-701, 7th Floor, East Wing No.6
Dubai Airport Free Zone,
PO Box 54316 Dubai, UAE

NSK United Kingdom Ltd

www.nsk-uk.com

Office 5, Gateway1000,
Arlington Business Park, Whittle Way,
Stevenage, SG1 2FP, UK

NSK Dental Spain SA

www.nsk-spain.es

C/ Mòdena, 43 El Soho-Európolis
28232 Las Rozas, Madrid,
Spain

NSK Asia

www.nsk-inc.com

1 Maritime Square,
#09-33 HarbourFront Centre,
Singapore 099253